

Victims: Rich Farver, Lou Terrell, Charles Cutter, Dwight Anderson, Kathy O'Hara, Laurel Amtower, Richard Funston, & Samantha Stauber (?)

This is written by a mother whose son was part of the massive cancer cluster at San Diego State University, caused by cell-phone senders and towers. We heard about this happening before... now comes insider information coming from a mother who lost her child for corporate greed...and look at the resources she supplies!! Those links were not active, below... you might have to fiddle with them or even Google them, because of the "dots" replacing the last parts of the links, not sure. But there is enough there to find them, with a little effort, if necessary. [the links have been corrected - there may even be more articles available]

San Diego State University Brain Cancer Deaths by Virginia Farver, Fort Collins, Colorado, USA - August 28, 2012:

My Son Died - Smart Grid Meters

From Deborah Tavares
3-13-13

, the mother of Rich, has authorized release of her letter to all on your email lists...of
ory...

sonal story demonstrates how our government is intentionally mandating the deployment
ave frequencies that injure us.. Our government has been "taken" by corporations and
anking mafia. The Telecom Industry has been given full authority to deploy wireless
ogies that damage our DNA. This is not an accident. This is intentional. This is for
te gain and the eugenics agenda to reduce the population. This is REAL . . Rich died
a lost her son to microwave frequencies . . .This is OUR battle. This is OUR time. . .T
e our loss, our mothers, fathers, sisters, brothers, aunts, uncles, and OUR CHILDREN
of humanity is at stake . . .

ited Nations, the Bilderbergs aka the Illuminati are moving forward for Full Spectrum
Control and Dominance and their Eugenics program. They told us long ago in their
nts - <http://www.StopTheCrime.net> - Source Documents.

quired that all nations, all countries, all people be connected to the Global Smart Grid i
Global Banking Controlling Mafia to bring in a One World Government and control a
resources.

s, while we are still physically able, MUST answer the call to disburse information and
this deadly assault upon all nations!

re silent weapons for a quiet war and frequencies have replaced bullets,

h

www.smartmetersmurder.com/

www.stopthecrime.net/

www.toxicsky.org/

<http://antennasearch.com/> to locate the cell towers and antennas nearest your homes, and

mind NOT ALL sites will be shown. These are the weapons being deployed in our neighborhoods . . .

the Barrie Trower YouTubes on <http://www.smartmetersmurder.com/>

Reporters and Editors of LA Times

My name is Virginia Farver from Fort Collins, CO.. I want to share my Story with you. Smart Grid-Metering is so very dangerous. I lost my Beautiful, Young Son from Glioblastoma Multiforme Brain Cancer on October 11, 2008. Rich, had attended SDSU (San Diego State University), and was working and living in San Diego at the time of diagnosis. Dr. Vriyaya, a Neurosurgeon from Poway, California told the family that his, " Cell Phone was the cause of his death." Dr. Richard Marschke, an Oncologist here in CO., told the family that this was, " Not the cause of his death."

On August 7, 2009 approximately 10 months after my Son's death I typed in, ' Cancer Cluster in San Diego.' The very 1st articles were about a - Breast Cancer Cluster on the UCSD San Diego campus. Many women in the Literature Building on campus were diagnosed, and many died of the disease. I cannot get some of the links to come up. If you type in, ' NYTimes, 2009 UCSD Cancer Cluster,' [- <http://well.blogs.nytimes.com/2009/02/24/campus-building-blamed-for-cancer-cluster/>] there is a link that you must read. In this link ,there is highlighted in blue - F. Lee Garland Report [- http://www-ccr.cornell.edu/LBCI/Garland_Report_to_Chancellor_Literature_Building.pdf]. Dr. Leeka Khanna - Electrical Power Research Institute - was commissioned by UCSD to write a report on the Cancer Cluster. Page 4 of this report, there have been many other cancer deaths than just the Breast Cancer Cluster. Page 27, is a special Thanks to Jim Turman from SDG&E - San Diego Gas & Electric Company. Both of these people should have been Removed from conducting any investigations. This was a Complete Conflict of Interest!!! UCSD had an Epidemiological Researcher and the investigation stopped there.

www.10news.com/news/workers-rally-over-ucsd-cancer-cluster

www.10news.com/news/electromagnetic-expert-investigates-ucsd-cancer-cluster

I then saw articles about a, 'Brain Cancer Cluster on the SDSU Campus.' I ended up contacting Rich, is the graduate student mentioned in these. I'll put the links below. I started to contact the SDSU Administration and found this futile. I then drove out to San Diego staying the weekend of October, 2009. I met with Professors Nancy Speckmann, and Farid Abdel-Nour of Nasatir Hall for meetings. Both Professors told me that Rich, would spend long hours in Nasatir Hall, room 131. Rich, was a TA for Nancy Speckmann, and would meet students, grade papers, and study in room on weekends studying. Nasatir Hall, room 131 is the Building, and room on campus where most of the cancer victims were located.

[www.voiceofsandiego.org/science/article_6a12a31b-777c-5560-bf88-75f1f0b4192f.h](http://www.voiceofsandiego.org/science/article_6a12a31b-777c-5560-bf88-75f1f0b4192f.html)

www.nbcsandiego.com/news/health/SDSU_Room_Haunted_by_Cancer_San_Diego

www.usnews.com/education/blogs/paper-trail/2009/03/11/sdsu-professors-question-brain-cancer-deaths

www.nbcsandiego.com/news/local/Coincidence-or-Cluster.html

After arriving back home to CO., the SDSU Administration sent me an, 'Epidemiological Report' written by Dr. Thomas Mack. 3rd paragraph in this report, he mentions that he has, "No knowledge of Chemical or Radiation Concerns, and therefore are none." I immediately contacted Dr. Mack. Dr. Mack promptly called me at home. I asked Dr. Mack about a HUGE COIL located directly outside of Nasatir Hall, Room 131. Dr. Mack denied this could be the cause, and dismissed this notion off rather quickly. I then told him of, "Everyone's Concerns." Dr. Mack said, "They should be concerned." This comment made me furious, and quite frankly, made no sense. Because of Dr. Mack's Epidemiological Report, the SDSU Administration refused to conduct a Toxicology Study. These Professors requested one, and were denied. I have contacted one on several occasions, never receiving a response. I contacted the Governor's Office Representative Marti Emerald, the Mayor's Office, and many governmental agencies. The question is, 'Why,' I have not received any help:

www.foundation.sdsu.edu/pdf/about_2011_12_sponsor_listing.pdf.pdf

decided to look into this so called, 'cell phone,' tower on my own. It is HPWREN - High Performance Wireless Research and Educational Network, a Backbone Node to the UCSD Computer Center in San Diego. It is also GWEN - Ground Wave Emergency Network, which is known to hug the ground. Nasatir Hall, Room 131 is located on the bottom 1st floor of the building. HPWREN is connected to the Lambda Rail (Grid), Tera Grid, PRAGAMA Grid. Combined, these are the, ' SMART GRID.' It is the Engineers and Scientists behind the technology developing Smart/AMI meters, Smart Dust, Drones, RNM technologies, among many others. These Grids are located on many college campuses across the US, and other Countries, forming a World Grid. There are 2 sites on the SDSU Campus. One on top of the Communications Building (which towers above Nasatir Hall), and one on top of the KPBS News Station on the other side of campus. Both are within 1/4 mile of each other, and are considered being located on the high ground of campus. HPWREN includes Homeland Security, DoE, DoD, DARPA, Air Force, National Institutes of Health, SPAWARS, NASA-Inmarsat Satellite, Emergency Services, and many HUGE Corporations. The University of Alaska is connected through the Grid system through the HAARP facility in Alaska. HPWREN is funded by the NSF - National Science Foundation, OUR Tax Dollars:

www.gi.alaska.edu/students/PARS

HPWREN SPAWARS: - <http://hpwren.ucsd.edu/news/20060720/>

GWEN - Ground Wave Emergency Network, located on Government Property, and on tops of Communications Buildings:

HPWREN-Communications Building: - <http://hpwren.ucsd.edu/news/021223.html>

- <http://coldwar-c4i.net/>

HPWREN - Inmarsat Satellite: - <http://hpwren.ucsd.edu/news/010926.html>

Smart GRID: - <http://www.inmarsat.com/Support/Manuals/index.htm>

expertscolumn.com/content/inmarsat-satellite-grid-a... [-

expertscolumn.com/content/inmarsat-satellite-smart-grid-applications]

N SDSU BRAIN CANCER VICTIMS:

ARVER - my Son. Diagnosed with GBM Brain Cancer, March 2008, died October 1 week after his 29th Birthday/ Nasatir Hall, Room 131, facing HPWREN cell tower.

ERRELL - diagnosed with Primary Brain Lymphoma (Brain Cancer), 2008/ Nasatir next to 131 facing HPWREN cell tower

LES CUTTER - diagnosed with GBM Brain Cancer, died June 18, 2009/ Nasatir Hall facing HPWREN cell tower

IT ANDERSON - diagnosed with Different Form of Cancer, and died/ Nasatir Hall, facing HPWREN cell tower

LATHY O'HARA - diagnosed with GBM Brain Cancer, May 2008/ KPBS News Station. Still alive, fall 2011, however not doing well.

UREL AMTOWER - diagnosed with GBM Brain Cancer, November 2009, died August Arts & Letters Building on campus, right next to Nasatir Hall (within yards).

died at the age of 44, and left behind a 12 year old daughter.

RD FUNSTON - diagnosed, and died from GBM Brain Cancer in 1993 with cell tower and taken down in 1995. To once again, be replaced.

IBLE NEW VICTIM - SAMANTHA STAUBER - 20 years old with classes in Arts &

After the death of Ms. Laurel Amtower on August 29, 2010 I contacted San Diego News reporter Paul Krueger. Paul said, " Another one?" Paul, asked me to send in my information. CE! My 1st experience with the tightly controlled main stream News. A reporter from

go Tribune,' called me at home one day. This gentleman (who would not reveal his name) said that this Story would, ' Never get out in San Diego.' I asked, " Why?" He replied, " Because of BENEY." I was very thankful of his call.

This Story was Instrumental in the WHO - World Health Organization reclassifying Non-Ionizing Radiation to a Class 2B Carcinogen, May 2011, the same as DDT and Lead. This reclassification was Very close to being a Class 2A carcinogen. Ionizing Radiation (X Rays), breaks DNA instantly. Non-Ionizing Radiation (ALL Wireless), is ACCUMULATIVE, the more Cell , or DNA damage. This is true for Cell phones, Cell towers, Microwave ovens, Power-lines, WI-Fi, Smart/ AMI Meters. Smart Meters emit PULSED radio waves. Between 10,000, and 200,000 pulses per meter, per day, per household The human body takes time to recover after EACH pulse. This will BLANKET our neighborhoods, and cities with radiation on!!

ALL cell phone manuals say to keep away from heads, and bodies. BlackBerry Torch (latest model in production): keep .98 inches away from heads, and bodies, and for Pregnant Women: keep away from abdomens to avoid putting these devices near their lower abdomens. Please Watch the TV ads for Sprint, Verizon, T-Mobile cell phone commercials. The Industry Reps., were caught on TV in Maine. These commercials no longer show actors with a cell phones being held near their heads, or bodies! Last week the Country of Belgium is now issuing warnings about kids and their addictions to wireless devices. A child's brain is not fully developed until age 18.

TS:

Per-Anders Hansson - Karolinska Institute, Sweden. WHO - World Health Organization Member. Hansson was RECALLED after the WHO reclassifying non-ionizing radiation to a Class 2B.

oster - Medical Writer in San Diego. Has written for the, ' Fire Fighters Union,' - cell
stations

Davis - Environmental Health Trust - wrote, ' Disconnect'

age - Bioinitiative Group- wrote, ' Bioinitiative Report - 1 hour of WI-Fi is equal to 2
of cell phone exposure, Cell or DNA Damage at 300 hours

ewton - EMR Policy Institute

e Hoch - SAFERWIRELESS

arks - California Brain Tumor Association - Testified on Capital Hill with Arlen Spec

Morgan and Sam Milham - International EMF Collaborative : Cell Phones and Brain
, 15 Reasons for Concern.



Dirty Electricity - mentions UCSD
 FLAWS of the Interphone Study

Deb Carney - Attorney with the, ' Lookout Mountain Cell
 in Denver,' - 4x's the normal amount of Brain Tumors in t
 area.

Katie Singer - Author - Releasing a book, June or July 20
 The Electric Silent Spring



The HPWREN cell tower is still on campus. There is an
 OUTdoor courtyard directly underneath this cell tower. I
 campus, daily for 3 weeks, fall 2011. I observed kids sitt
 under this cell tower for hours, day after day. There are n
 constructed,' Fraternity Row Housing Units,' across the st
 from the KPBS News Station, and cell tower on campus.
 watched Boys sitting on balconies for hours, and hours. S
 these new Fraternity units are newly adorned with metal
 windows, and metal balcony railings, which attract
 radiation. How many of these kids will become ill, or alre
 have? Some form of Cancer, No doubt!! Many, without
 knowledge!! I not only fear for these kids, I fear for Hum



Attached is a picture of this cell tower that I took Fall 200
 cell tower is on top of the Communications Building, and
 Hall, is located on the lower left in the picture. Nasatir H
 Room 131 is the bottom 1st floor window. Fall 2011 this

completely boarded up with cardboard lining the windows. Why? Is there something to
 OF COURSE!!!! These,' Criminal THUGS knew, and know, how dangerous this HPV
 er was, and IS!! Notice the DEAD TREE FOLIAGE on the surrounding trees. This
 Everything!

have to pay for it, and I don't have to go through the FCC"

sl.net/kb9mwr/projects/wireless/72mi.txt

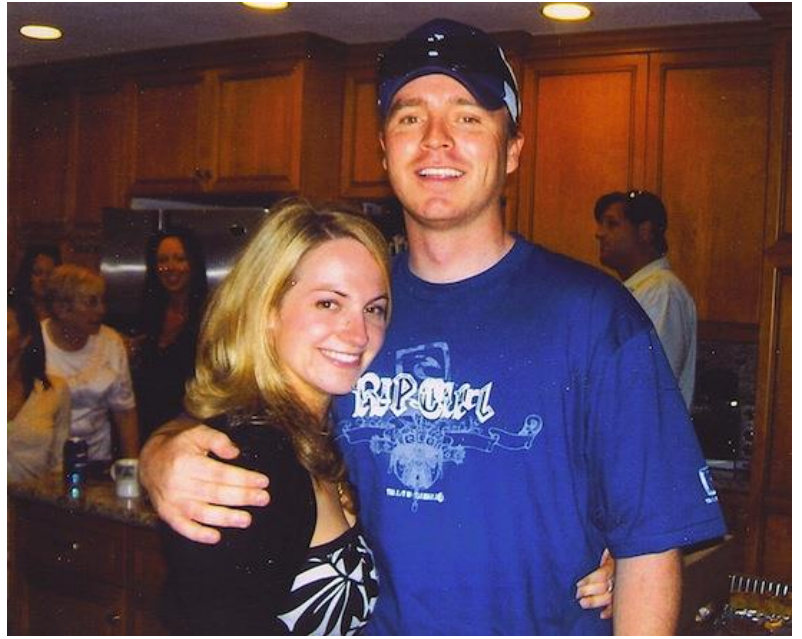
s the FCC, I would BUST these guys"

www.computerworld.com/s/article/76118/Agency_reduces_power_on_72_mile_WLA

Carlsbad Cancer Cluster,' involved many kids. Again, an 'Epidemiological Report,' was
Dr. Thomas Mack was helping in this investigation. These epidemiologists are being
, " Handsomely," for their efforts, all the the expense of our kids, and families lives. I
investigations into this Cancer Clusters been done, the whole - SMART GRID, could
oided. There are High Tension Power-Lines that cross the,' Kelly Elementary Proper
idential areas. 1Toxin + 1 Toxin = 1000. TOXICOLOGY STUDIES ARE THE PRO
DURES!!! Epidemiological Studies are nothing but, mere statistics!

www.utsandiego.com/news/2010/apr/29/parents-seek-answers-on-cancer-cases/

experienced many symptoms that I now know as,' Electro-Sensitivity Symptoms.' Head
Heart Palpitations, Sinus Problems, (Rich, was suffering from daily nose bleeds, and
appointment for March 14, 2008, but ended up at Sharpes Memorial Hospital on the eve
3, 2008 with bleeding in the brain), Endocrine Problems, (Rich, was suffering from
eating, which mysteriously disappeared after leaving SDSU), Rashes, Memory or
centration Problems. Rich, was applying for Law School in the California area at the time
is. I recall a conversation. Rich said," Mom, even if I get into Law School, I don't know
ke it through?" I replied," Why, would you say such a thing?" He said," I cannot see
er things." Yet, another sign, if only I had known! This has DESTROYED my life,
my family. I have 1 remaining Son. These Symptoms are REAL, and should not be
Attached is a picture of Rich, when he 1st arrived in San Diego. The 2nd picture is
on. Notice the skin coloring difference between the two. He looks COOKED in his
on picture, and WAS!! He is also squinting with his right eye in his graduation
This is where the tumor was located, the right frontal lobe. Rich, was 6'2", and very



porting thought to leave you with. With the release of 4G, and these Smart/AMI meters
LL be living in the same amount of radiation during a given day, as these SDSU Brain
Victims." Many of whom, were not in this area of campus for long. Rich, 3 years, L
er, 3 years.

ard by these Experts," End Stages for this type of radiation in our lives." 4G alone ha
d all Cell, and Antenna strengths. Besides being exposed to a Cell Phone wave, there
A-WAVE.' Israel, did not allow 4G.

y,

a Farver

hotmail.com

9-3798 corded landline only